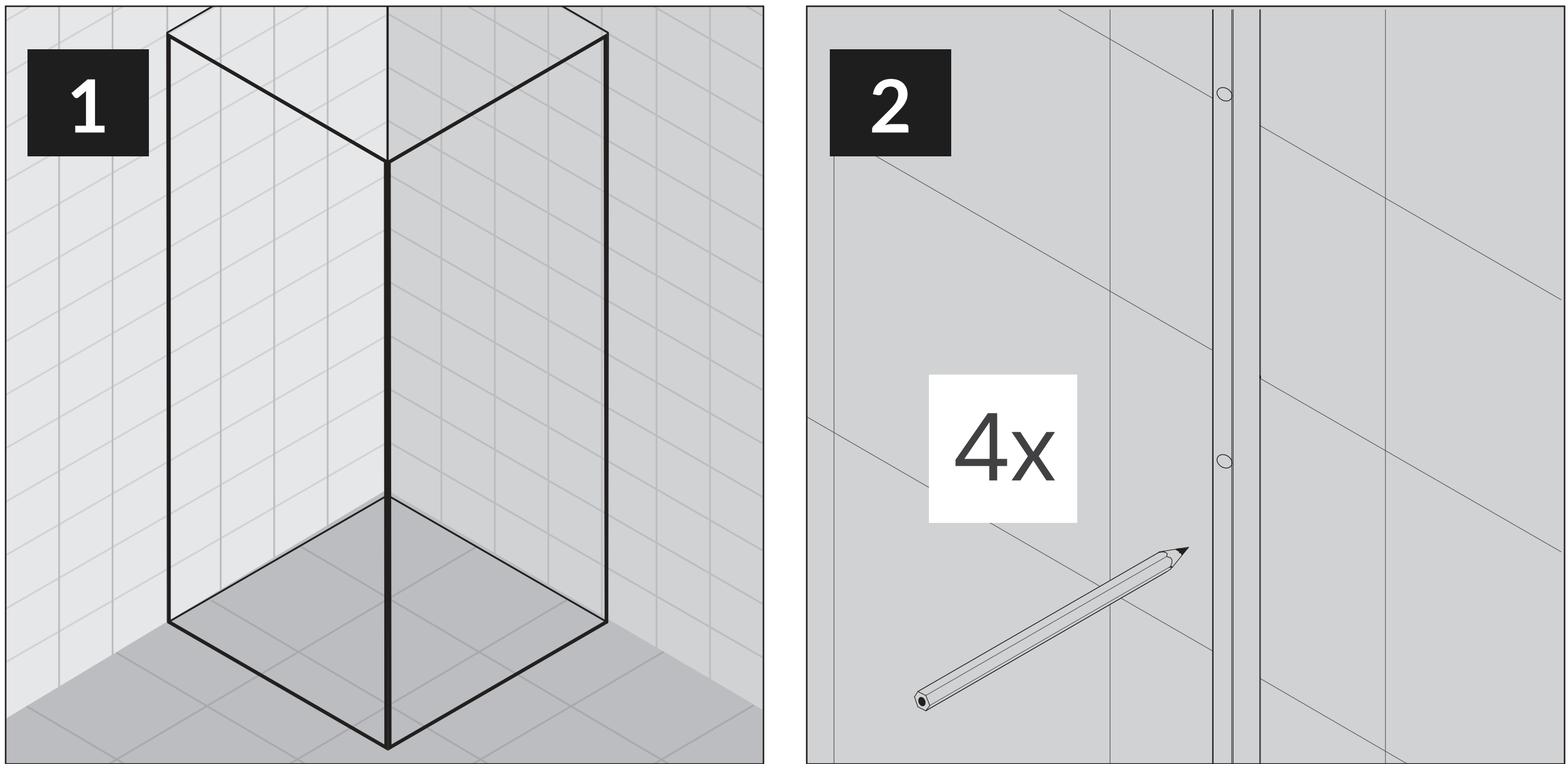


INSTALLATION MANUAL

GLAZZO

Installation guide for the shower enclosure

Since this is a custom-made shower screen tailored to the customer's specifications, a universal guide for standardized products cannot be used. Each screen is unique.

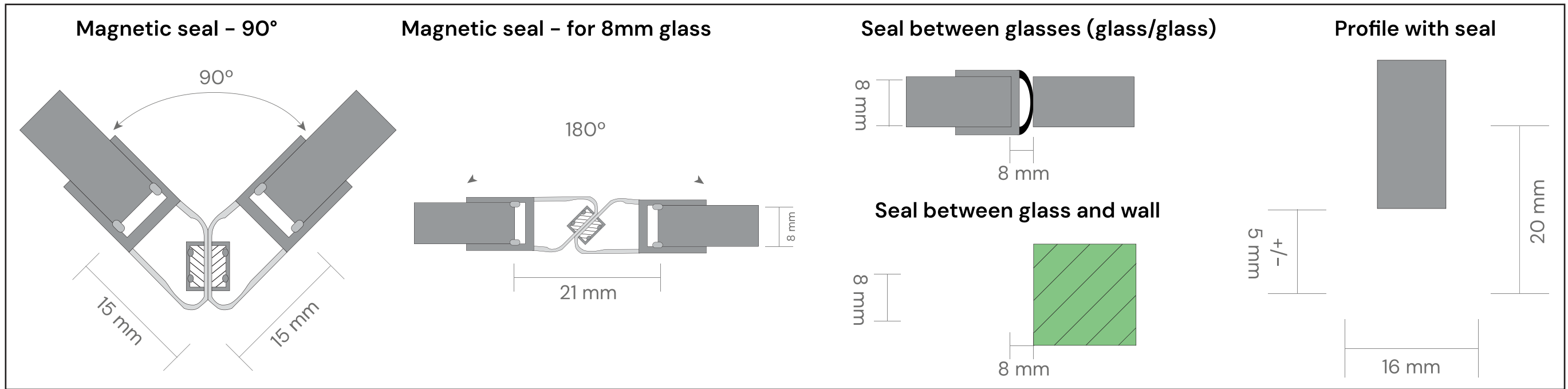


You have specified the dimensions of the corner on the floor (tiles) as 100 × 90 cm. This dimension determines the position of the outer side of the glass. This means it is the outer dimension of the corner. If you are installing the corner on a shower tray or plinth, remember that the corner is designed to be installed 2 cm from the edge of the tray (inward towards the corner). Mark these dimensions on the floor or tray. If installing on a tray, draw a line 2.2 cm inward. Indicate the positions of the individual glass panels (fixed panels, doors) on the floor. (See Fig. 1.)

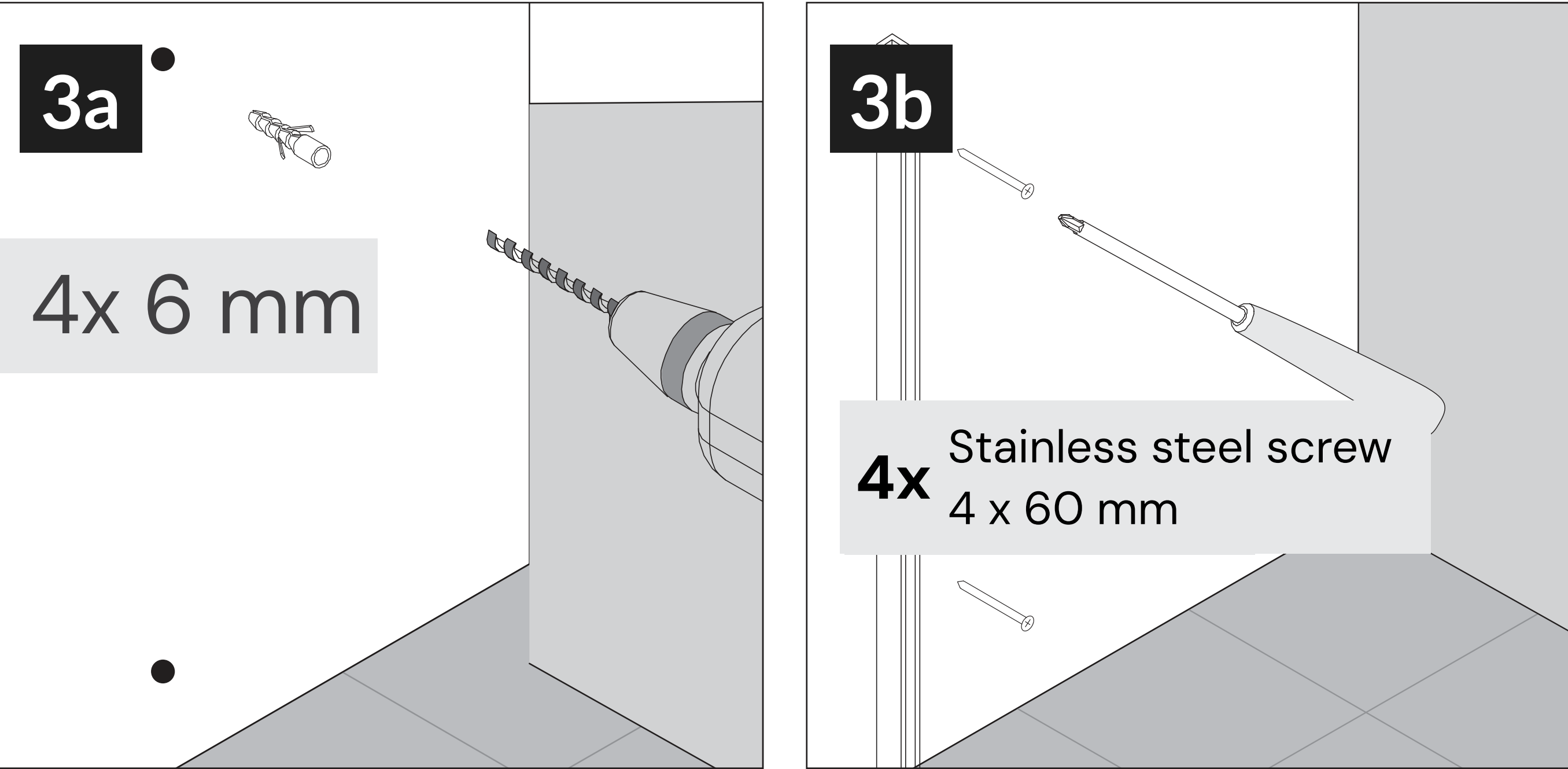
Attach the U profile to the wall and mark the drilling holes (see Fig. 2).

Here is a list of dimensions to maintain between the glasses, or between the glass and the wall:
Maintain an 8 mm gap between the fixed glass and the doors (at the hinges).
Maintain an 8 mm gap between the wall and the doors – if the doors close towards the wall.
If the doors close perpendicular to the fixed glass (90° corner joint), where magnetic sealing is used, subtract 15 mm.
Magnetic connection between the fixed glass and the doors (180°) – gap between glasses is 21 mm.
If you are mounting the doors directly on the wall, maintain a clearance of 7 mm between the glass and the wall at the hinges.

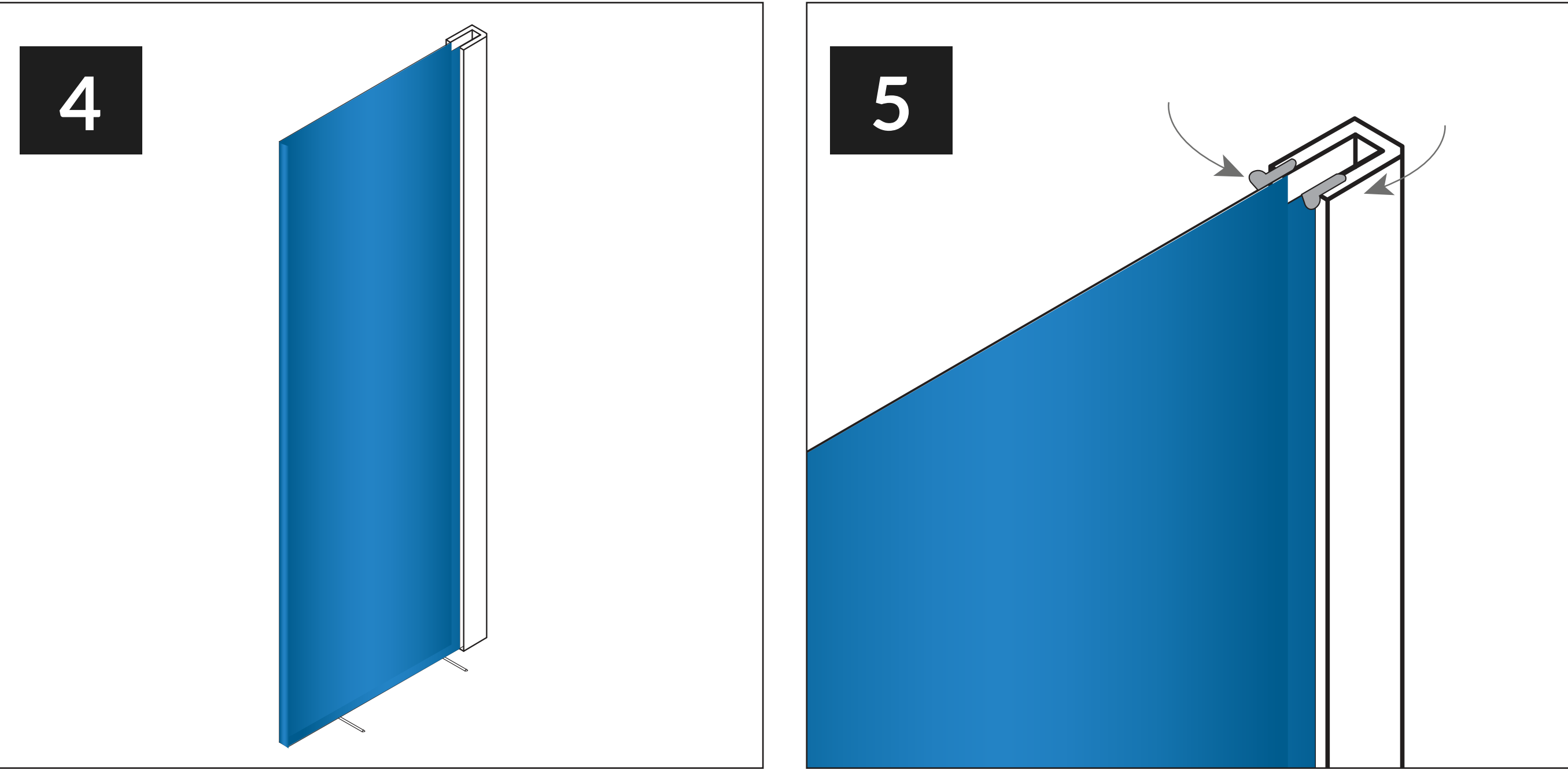
Dimensions of the seals:



Fixed glasses are installed into the U profile, which is screwed into the wall. A drill, plugs, and screws are included in the delivery. (See Fig. 3a and 3b.)



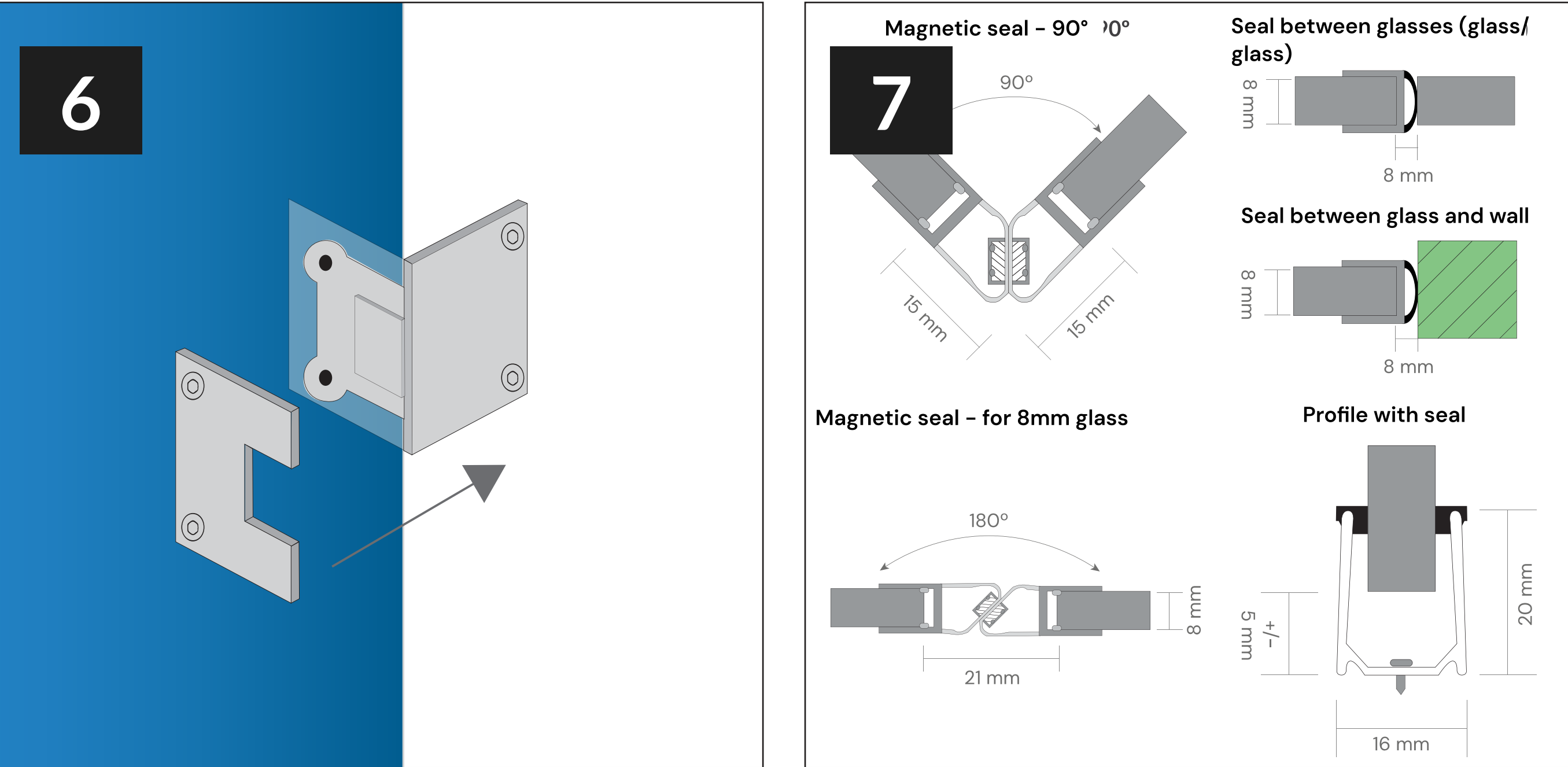
The fixed glass is placed on transparent silicone pads, which you cut to size (1 × 4 cm). Place the pads on the floor and set the fixed glass on these pads, sliding it into the U profile. (See Fig. 4.)



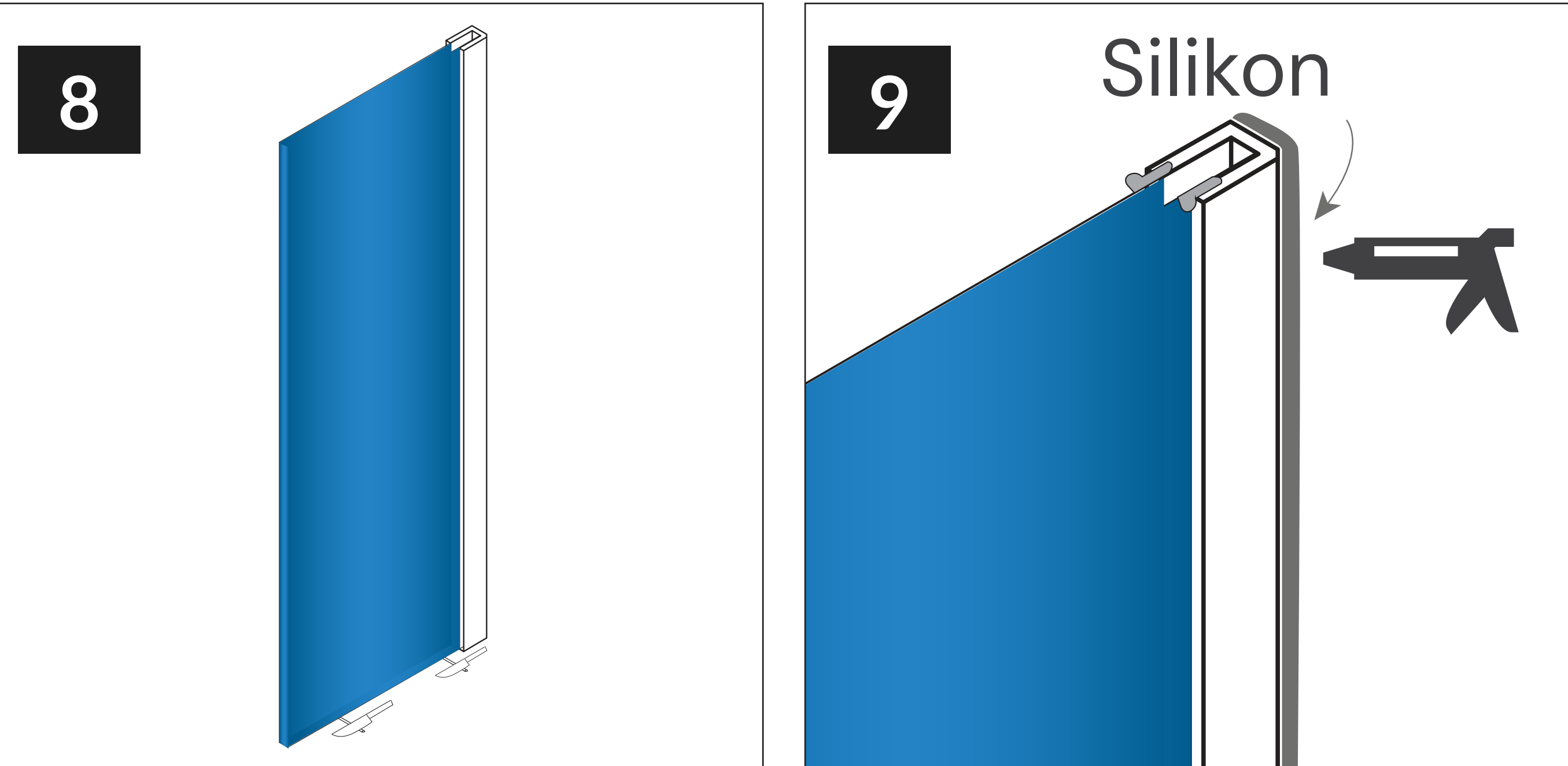
Subsequently, the glass in the U profile is secured on each side using seals. (See Fig. 5.)

For easier insertion of the seal, we recommend moistening the glass with a spray bottle of soapy water. The U profile creates a handling space in case of unevenness or squareness of the walls and floor. You have two types of seals, it doesn't matter which side you place them on. The U profile allows for the installation of glass with a thickness of 6, 8, or 10 mm. The supplied seal is chosen for a glass thickness of 8 mm.

Fixed glasses are installed into the U profile, which is screwed into the wall. A drill, plugs, and screws are included in the delivery. (See Fig. 3a and 3b.)

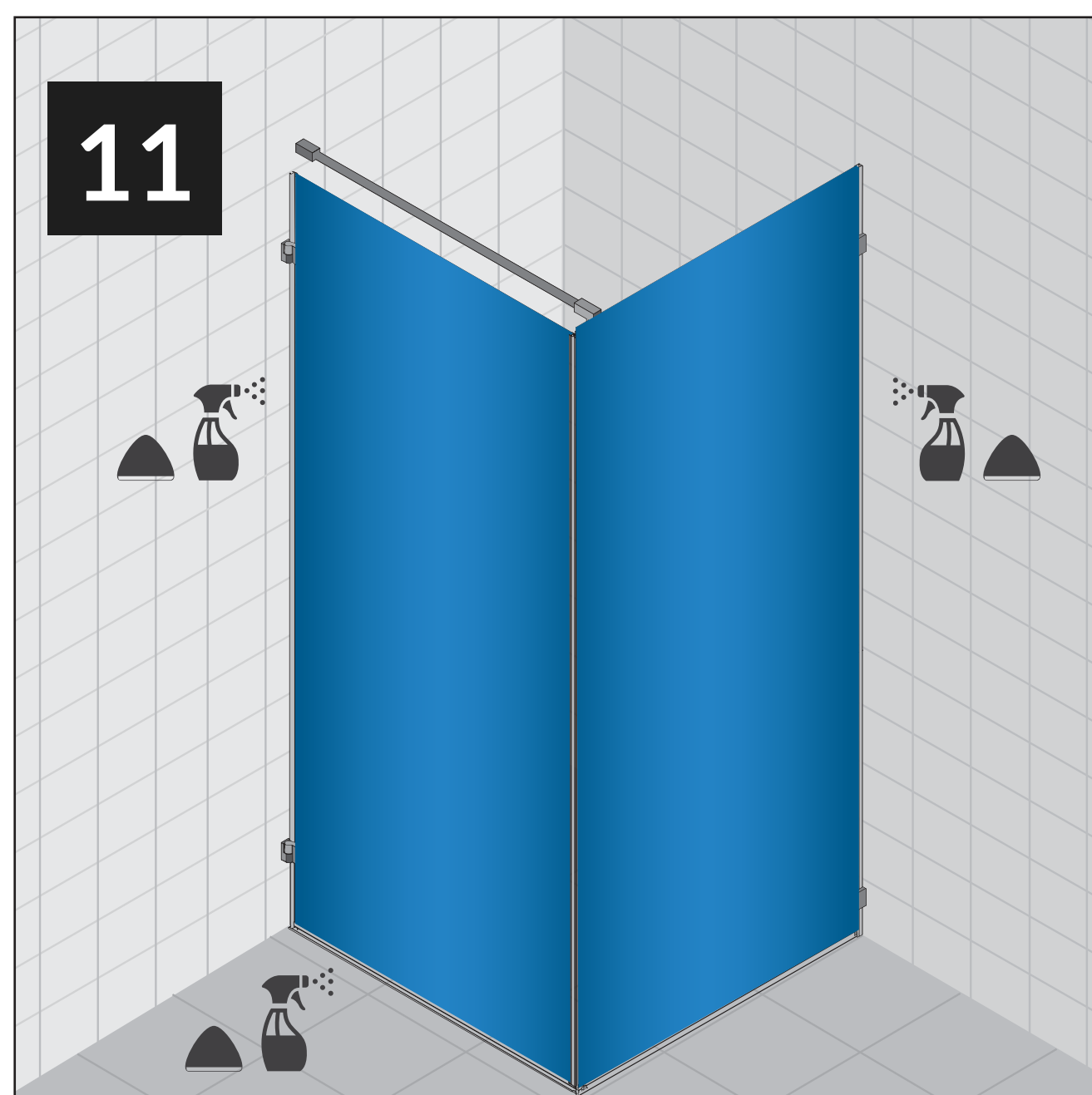
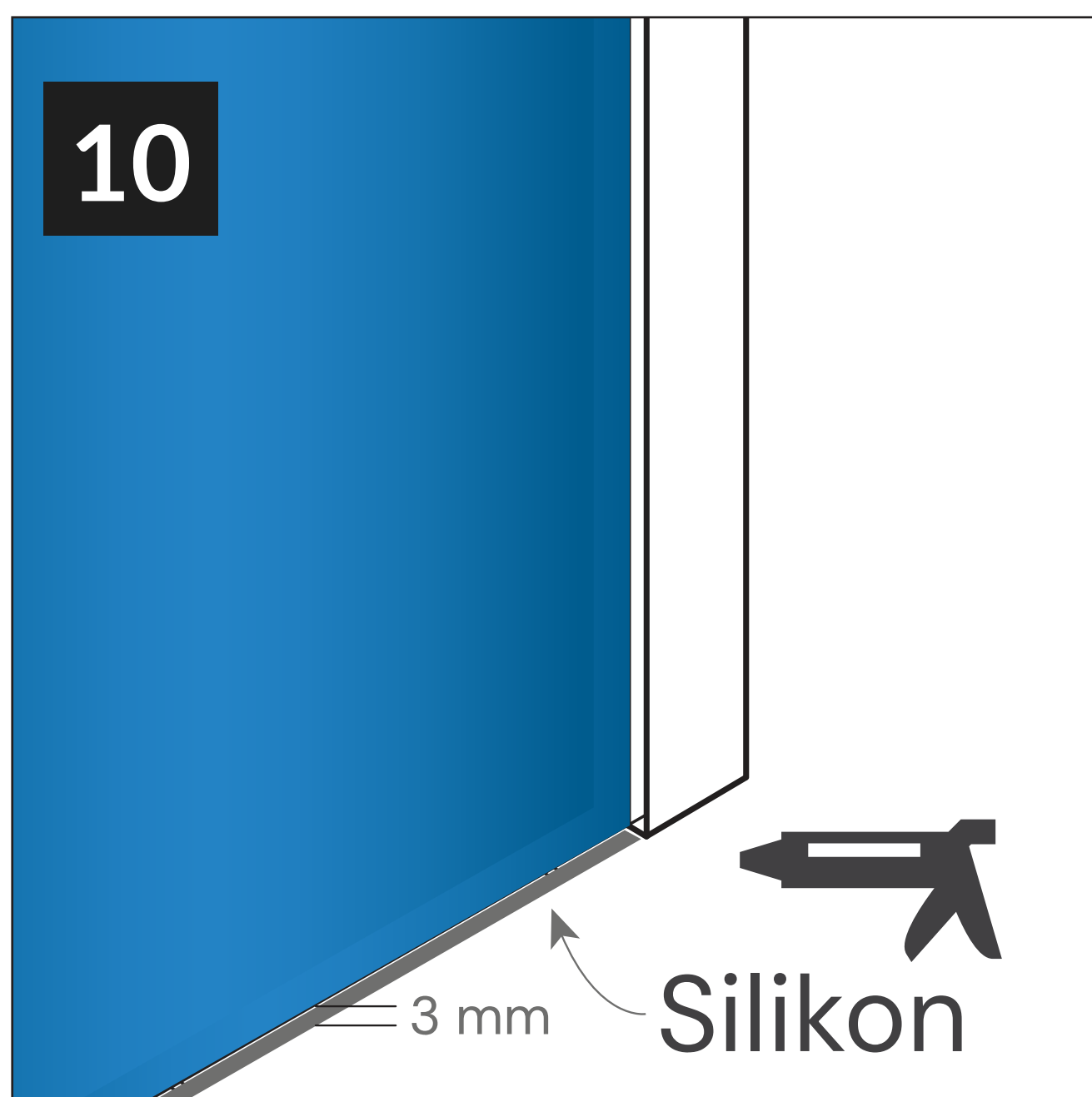


Next, stabilizing rods are installed, and with their help, the squareness of the glass walls is adjusted so that the seals seal properly and the magnetic seal holds together. The seal is snap-on and also allows for adjustment of the clearance. This means that the seal does not have to be pressed completely to the edge of the glass but can be extended by a few millimeters. After installing the corner, the silicone pads under the fixed glasses are aligned along the glass. (See Fig. 8.)



All parts are dried, degreased, and the resulting 3 mm gap between the fixed glass and the floor is filled with silicone, which is included in the delivery. Similarly, any unevenness between the U profile and the wall on the inside is sealed with silicone. (See Fig. 9 and 10.)

Spray silicone with soapy water and smooth it using the silicone scraper included in the delivery. (See Fig. 11.)



Attach the threshold profile under the door and place the seal on the bottom side of the glass. The screws on the hinges need to be tightened again after 2–3 days.

Thank you for choosing our custom-made shower screen. We believe it will serve you for many years and bring functionality, elegance, and comfort to your bathroom.

Installing the shower corner may require precision, so if you are unsure, do not hesitate to contact our technician – they are available even on weekends.

Remember that proper maintenance and care will extend the product's lifespan and preserve its aesthetic value.

Wishing you a satisfying experience, Glazzo.